



Your Question ▾

Article 00006

Problem or Question:

- Your SQLNET.LOG File's Size Is Dramatically Increasing In The NetReport Directory.
- How To Resolve This ORACLE Problem At the Net Report Management Console Side.

Quick Info ▾

Found In:

Net Report Version 3.0

Article Last Updated:

Thursday July 1, 2004

Product Information ▾

The Information in this article applies to:

Product:

Net Report

*Version:

3.0

[*Device or Interface]:

Any device, Oracle Database

Symptoms ▾

Problem Type:

Database Action execution error

Replication Context:

Show Me! ▾

Error Message: An error log is recorded in the Windows Event Viewer.

Event Type: Error

Event Source: NRFilterEngine

Event Category: None

Event ID: 150

Date: 30/06/2004

Time: 16:58:43

User: NT AUTHORITY\SYSTEM

Computer: CHIVAS

Description:

Action execution error (Insert to Database) on undefined resource in rule group Symantec Enterprise Firewall main rules group, rule id 1 nelrf :
<?xml version="1.0" encoding="ISO-8859-1"?><nelrf><a n="Adapter" v1="eth1



NET REPORT

```
"/><a n="syslog__hostname" v1="192.168.0.1"/><a n="Count" v1="3"/><a n="Year" v1="2004"/><a n="Month" v1="mars"/><a n="Destination IP" v1="192.168.0.1"/><a n="Destination Port" v1="16374"/><a n="IP Code" v1="UDP"/><a n="Level" v1="NOTICE"/><a n="MsgStr" v1="Possible spoofed IP packet dropped"/></nelrf> RuleGroup      : Symantec Enterprise Firewall main rules group RuleId      : 1 ErrDescription: Script Error:
```

Source: DdiX.FreeDdiX.1

Error: 80020009

Description: Oracle Error 904, op 26 ORA-00904: Invalid column name ; SQL=insert into MyTable(time1,src2) values ('2004-06-30 14:58:41', '192.168.0.53')
insert into MyTable(time1,src2) values ('2004-06-30 14:58:41', '192.168.0.53')

Line: 67

Column: 4

Code: <no source line text available> ErrorMessage : An exception occurred.

The SQLNET.LOG file contains the following paragraph several times:

```
Fatal NI connect error 12560, connecting to:  
(DESCRIPTION=(ADDRESS=(PROTOCOL=BEQ)(PROGRAM=oracle)(ARGV0=oracleORCL)  
(ARGS='(DESCRIPTION=(LOCAL=YES)(ADDRESS=(PROTOCOL=beq)))'))(CONNECT_DATA=(SID=ORCL)(CID=(PROGRAM=C:\PROGRA~1\NETREP~1\NETREP~1\NRFilterEngine.exe)  
(HOST=FR-FWLCPL01)(USER=SYSTEM))))
```

VERSION INFORMATION:

```
TNS for 32-bit Windows: Version 9.2.0.1.0 - Production  
Oracle Bequeath NT Protocol Adapter for 32-bit Windows: Version  
9.2.0.1.0 - Production  
Windows NT TCP/IP NT Protocol Adapter for 32-bit Windows: Version  
9.2.0.1.0 - Production  
Time: 27-JAN-2004 15:52:13  
Tracing not turned on.  
Tns error struct:  
nr err code: 0  
ns main err code: 12560  
TNS-12560: TNS: protocol adapter error  
ns secondary err code: 0  
nt main err code: 530  
TNS-00530: protocol adapter error  
nt secondary err code: 126  
nt OS err code: 0
```



Net Report Answer

*Cause:

- The Oracle API writes records in the SQLNET.LOG file when an insert SQL request execution error occurs.
- The most frequent cause of an insert SQL request execution error is a mismatch between the table definition in a Database Insertion Action definition, and the actual table on the Oracle database.
- This mismatch happens when:
 - The name of one (or more) Net Report **Destination** fields have been modified in the **Action** definition.
 - The table has not been dropped and then re-created on the ORACLE database



NET REPORT

Resolution or Work Around:

To solve this problem, please follow the following steps.


Locating the Symantec Enterprise Firewall Actions node

Steps

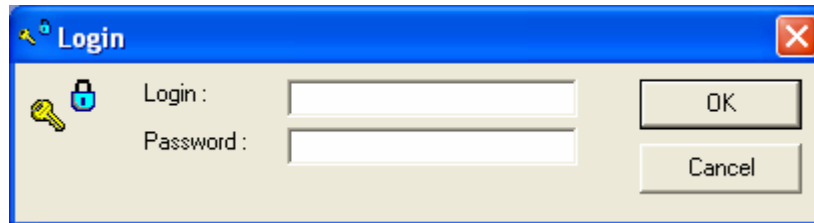
1. Select **Start > All Programs > Net Report > Management Console**.
2. Double-Click **on Management Console**. The **Login** dialog box appears.
3. Enter the following information in the **Login** dialog box:

Login: your Login name

Password: your Password

 **Note:** use the same **Login** and **Password** as you entered in the **Net Report Configuration Wizard**.

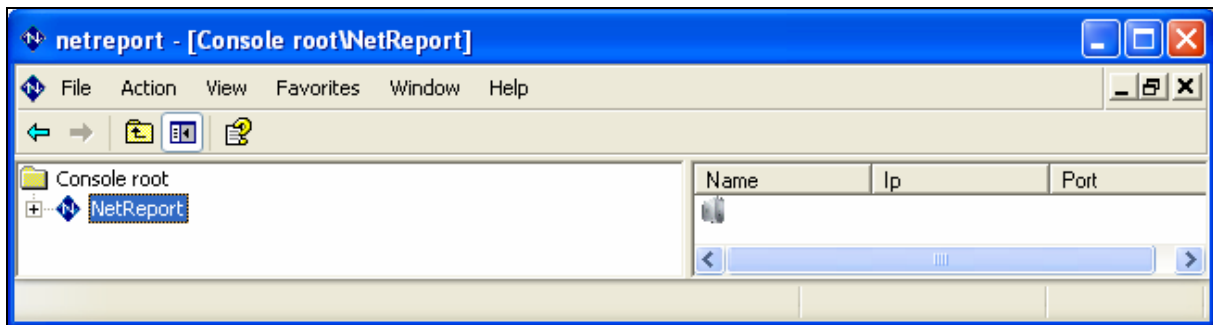
Show Me! 



The **NetReport Management Console** opens.

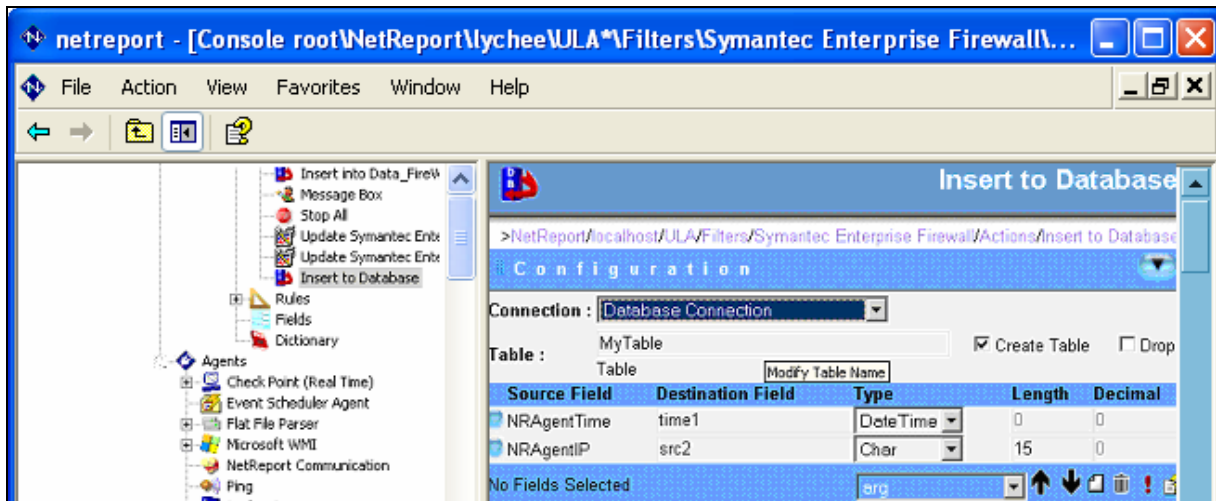
4. Click the plus sign next to **NetReport** in the left **Console root** pane to expand the subitems.

Show Me! 



5. Select **[LocalHostName] > ULA > Filters > Symantec Enterprise Firewall > Actions >**.

6. Select the **Insert to Database** action in the left **Console root** pane.
Show Me! ▶



The **Insert to Database** sheet opens in the **NetReport Management Console's** right pane.



Using the Event Viewer

Steps

1. Select **Start > Control Panel > Administrative Tools > Event Viewer**. The **Event Viewer** opens.
2. Check the **Event Viewer** message to locate the **Database Insertion Action** that failed.

Note: in this example the **Database Insertion Action** that failed is **Insert to Database** which has been invoked by the #1 rule of the **Symantec Enterprise Firewall main rules group**.

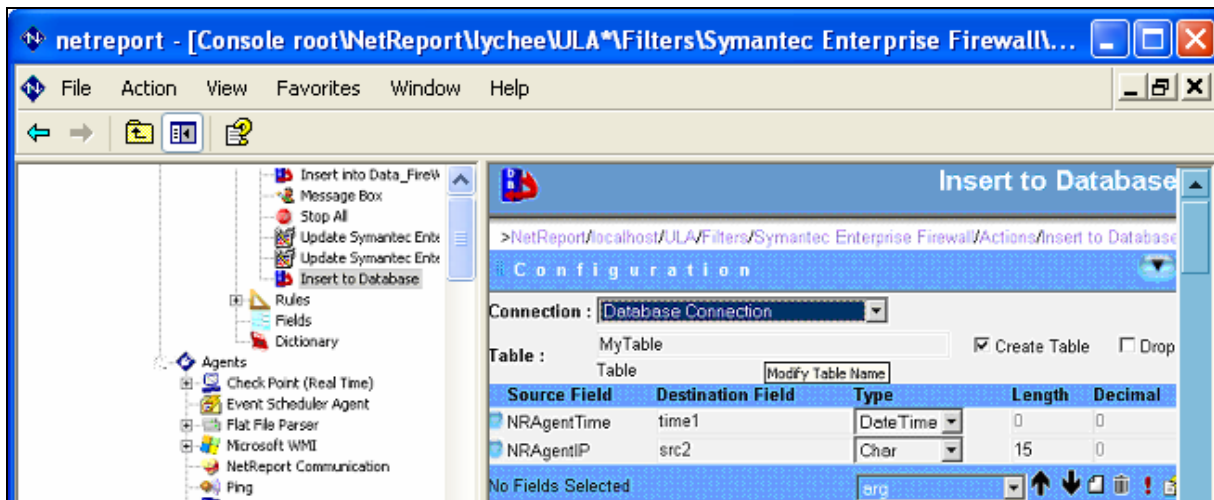
Correcting the Database Insertion Action

Steps

1. Return to the **Net Report Management Console** **Insert to Database** Action of the related device.

Note: the rules group name informs you concerning the related device.

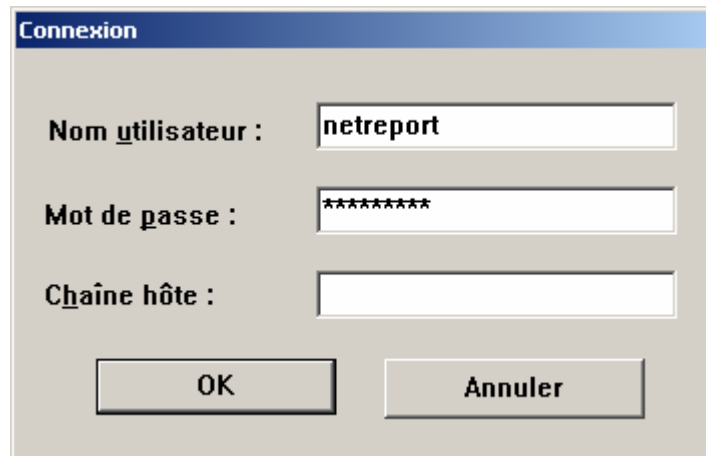
Show Me!



2. Select **Database Connection** in the **Configuration** drop-down sheet **Connection** drop-down list.
3. Note the **Table** name: **MyTable** in this example.



4. Open the **SQL*Plus Oracle** utility. The **Connection** dialog box appears. **Show Me!** 



Connexion

Nom utilisateur : netreport

Mot de passe : *****

Chaîne hôte :

OK Annuler

5. Log on the database with the same User Id as the one defined for the **Oracle Database Connection** initialization.

 **Note:** usually the User ID is netreport.



Locating The Error With The SQL*Plus Oracle Utility

When the connection is established follow the steps below:

Steps

1. Type the following command to display the description:
`desc mytable;`

A listing similar to this one appears shown:

Show Me! 

Name	Null?	Type
-----	-----	-----
TIME1		DATE
SRC		VARCHAR2(15)

2. Compare the **Name** column of the above listing with the Net Report **Insert to Database** action **Destination Field** column

 **Note:** here the Net Report **Insert to Database** action **Destination Field** is SRC, this has been renamed to SRC2 in the **Net Report Insert to Database Action definition**.



Fixing The Error With the Net Report Management Console

Once the mismatch(es) has(ve) been found, there are two ways to fix the problem.

Note: the phrase “related to this table” used below, refers to possible constraints, indexes, grants and so on that you might have defined manually on the table.

Options

Either

- **Keep The Data Contained By and Related To The Table**

1. Modify the value(s) that do not match the table definition in the **Net Report Management Console’s Insert to Database Action Sheet’s Destination Field** column.
2. Go to the **ULA** branch in the left **Console root** pane.
3. Click **Apply Changes**.

Or

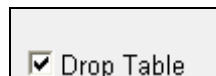
- **Lose The Data Contained By and Related To The Table**

Then

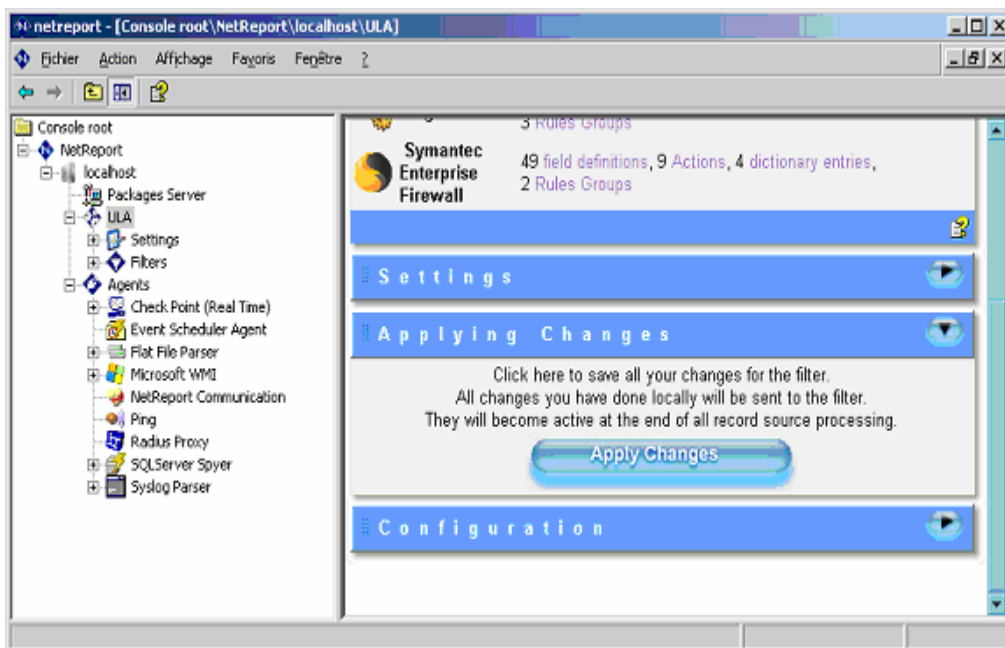
4. Drop and recreate the entire table.

Caution: you will lose all the data contained by and related to this table.

5. Check the **Drop Table** check box in the **Net Report Management Console’s Insert to Database Action Configuration** drop-down section. **Show Me!**



6. Click the **Create Table** icon.
7. Select **Net Report > [localhost Name] > ULA**.
Show Me!



8. Click **Apply Changes**.



NET REPORT

***Status:**

This behavior is by design.

***See Also:**

[Net Report User Help](#)