

Your Question

Article: 00046

Question:

How to Find Out More About Net Report's New Firewall Statistics Dashboard's?

Net Report Answer



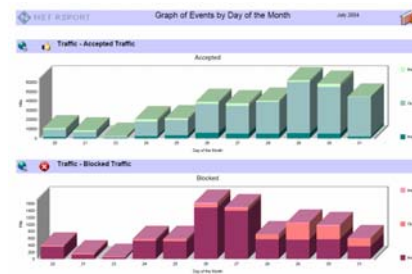
Firewall Statistics Dashboards

Net Report interprets and presents aggregated firewall data in easy-to-read, systematically categorized, graphical Net Report Web Portal Dashboards (dynamic reports). These reports give you a snapshot of your firewall activity at any instant, or paint a broader picture of network usage over time. [Click here](#) to view a sample Dashboard.



Customized Dashboards

The Dashboards are generated following the Parameters you entered in the Net Report Web Portal. The reports can therefore be customized anywhere at any time based on the exact data you want to study from your database. For example, you can get detailed information on the Top *n* Blocked Users – specifying for example the Top 5, 50 or 100 Blocked Users.



Aggregated Database Firewall Statistics

The Firewall Dashboards are created from aggregated data in your database. Net Report's scheduled Aggregation and Purge features enable you to reduce the size of your database volume by 20.

Internal Users		Blocked	Total
IP Address	Blocked	Number of Hits	Number of Services
192.168.1.100	Blocked	10	5
192.168.1.101	Blocked	10	5
192.168.1.102	Blocked	10	5
192.168.1.103	Blocked	10	5
192.168.1.104	Blocked	10	5
192.168.1.105	Blocked	10	5
192.168.1.106	Blocked	10	5
192.168.1.107	Blocked	10	5
192.168.1.108	Blocked	10	5
192.168.1.109	Blocked	10	5
192.168.1.110	Blocked	10	5



Dynamic Dashboards Available

Net Report supports and offers dynamic dashboard reports for the following devices:

- **ARKOON Network Security:** For ARKOON Network Security WELF Format Logs.
- **CheckPoint (Real Time):** For CheckPoint (Real Time) Format Logs.
- **CheckPoint (Flat File):** For CheckPoint (Flat File) Format Logs.
- **Clavister:** For Clavister Format Logs.
- **Fortinet FortiGate:** For Fortinet Fortigate WELF Format Logs.
- **Juniper Networks NetScreen:** For Juniper Networks NetScreen WELF Format Logs.
- **Microsoft Internet Connection Firewall W3C:** For Microsoft Internet Connection Firewall W3C Format Logs.
- **Microsoft ISA Server (W3C Format):** For Microsoft ISA WebProxy W3C Format Logs.
- **Microsoft ISA Server (Native Format):** For Microsoft ISA WebProxy Native Format Logs.
- **NETASQ:** For NETASQ WELF Format Logs.
- **netfilter iptables:** For netfilter iptables Format Logs.
- **netfilter ipchains:** For netfilter ipchains Format Logs.
- **Symantec Gateway Security:** For Symantec Gateway Security Format Logs.
- **Symantec Raptor Firewall:** For Symantec Raptor Firewall Format Logs.
- **WatchGuard:** For WatchGuard WELF Format Logs.



Real-Time Reports Generated On-Demand

What sets Net Report ahead of the competition is that its reports are dynamic. Every click produces a new report, all in real-time with the parameters that you enter. This makes it easy to investigate and diagnose possible security problems, and to observe your firewall operation at any level of detail that you want. Most importantly, Net Report reports are management friendly, needing no technical background to understand.

There are no restrictions to the number of users who can simultaneously view the reports.



Firewall Statistics Dashboard Output Formats

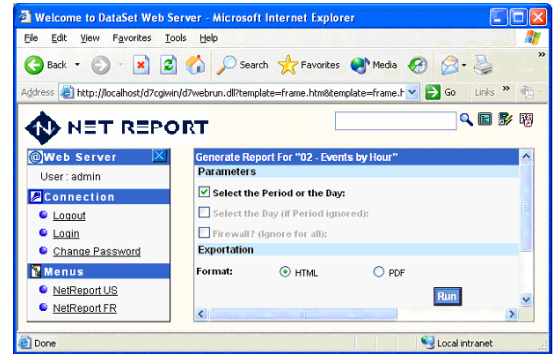
The Firewall Statistics Dashboards are available in several output formats, from HTML, through PDF to EXCEL. Reports can be printed and exported to other applications. We recommend using Adobe Acrobat Reader 6.0.1 for the best quality *.pdf output and to benefit from the new navigation features (Bookmarks, hyperlinks and more). Both desktop and Browser-based Navigation is possible.

NET REPORT



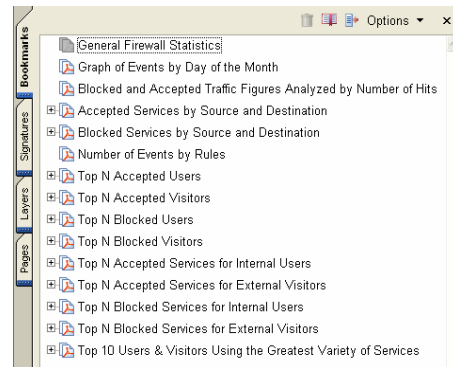
Net Report Web Portal Browser Interface

The Net Report Web Portal browser interface gives you the convenience of accessing reports from anywhere, at any time, with just a single server installation. These reports provide information that helps you get a clear picture of your firewall activity: internal and external users that went through the firewall, destinations accessed, bandwidth used, accepted traffic, blocked attempts, blocked users, blocked destinations, and much more. [Click here](#) to test drive our Evaluation Version and check it all out.



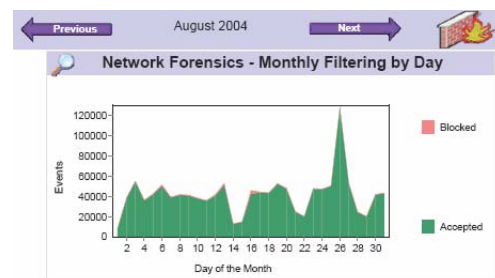
Close-up on an Example Dashboard Contents

- Accepted Services by Source and Destination
- Blocked Services by Source and Destination
- Number of Events by Rules
- Top *n* Accepted Users
- Top *n* Accepted Visitors
- Top *n* Blocked Users
- Top *n* Blocked Visitors
- Top *n* Accepted Services for Internal Users
- Top *n* Accepted Services for External Users
- Top *n* Blocked Services for Internal Users
- Top *n* Blocked Services for External Users
- Top *n* Users and Visitors Using the Greatest Variety of Services



Chronologically Interlinked Dashboards

The dashboards are chronologically interlinked, enabling you to view the statistics from month-to-month, week-to-week and day-to-day. The Dynamic **Previous** and **Next** arrows enable you to navigate between reports from different months, all the reports for the previous or following months are hyperlinked, the hyperlinks enable you to click and go directly to the details you need.





NET REPORT



Easy Administration

Busy administrators will especially appreciate Net Report's automated reports, which can be generated on schedule as a server task and then delivered by e-mail. Net Report's Firewall Statistics Dashboards can be used by IT Directors and Security specialists. Dynamic Dashboards are available for both Proxies and Firewalls. Net Report's browser-based interface provides a plethora of reports in four other major categories, including:

- Web Servers.
- Intrusion Detection Systems.
- Anti-Virus.
- Anti-Spam.



Scheduled Firewall Statistics Dashboards

Firewall Statistics Reports are automatically generated daily, they are also scheduled to cover the period from the first day of the month to the day you want to generate a report on. You can schedule specific reports to be generated, archived or sent by e-mail anywhere at anytime.



Dashboard Technology

The technology behind Net Report Firewall Statistics Dashboards can power applications in a wide range of areas, including inventory management, sales and transaction tracking, data auditing, and call center administration. Net Report can be customized to suit various OEMs or adapted to extract and summarize any kind of data from a relational database. [Contact us](#) to find out how we can customize an application that meets your requirements.



More About Our Software

Your firewalls send their logs to Net Report, where the data is processed and consolidated in real-time. Consolidated logs are then stored in a database to provide instant responses to report queries. Its architecture enables on-the-fly ad hoc reporting. You can aggregate and purge your database tables at any moment either dynamically or via the Net Report Aggregation and Purge Scheduler.

The architecture is scalable, giving you the flexibility to install on one single machine or on a group of machines. The scalable architecture allows you to start out with a small system and then add other machines as needed. Since Net Report's hardware requirements are minimal, even older machines can be deployed suitably to host various components of the application. Server management is done with a browser-based graphical user interface



See Also

Net Report Knowledge Base at:

http://www.netreport.fr/us/support/sup_knowledgebase.asp