



## Your Question

Article: 00051


### Question:


What does the **Overwrite existing data** check box in the Configuration Wizard do?

## Net Report Answer

### Overwriting Existing Data

Please note the **Overwrite existing data** check box at the lower left corner of the **Database Configuration** dialog box. This check box will create (and destroy) Database tables for the devices you select in your database (if it is the first time you install Net Report). If you have previously configured devices for Net Report via the Net Report Configuration Wizard, the Overwrite existing data will destroy and create the tables again.

 **Warning:** if you select the Overwrite existing data check box, Net Report recommend that you save the data in the database tables. The data in these tables will be destroyed and the tables will be created automatically when you reconfigure Net Report either with the same devices selected or different devices selected.

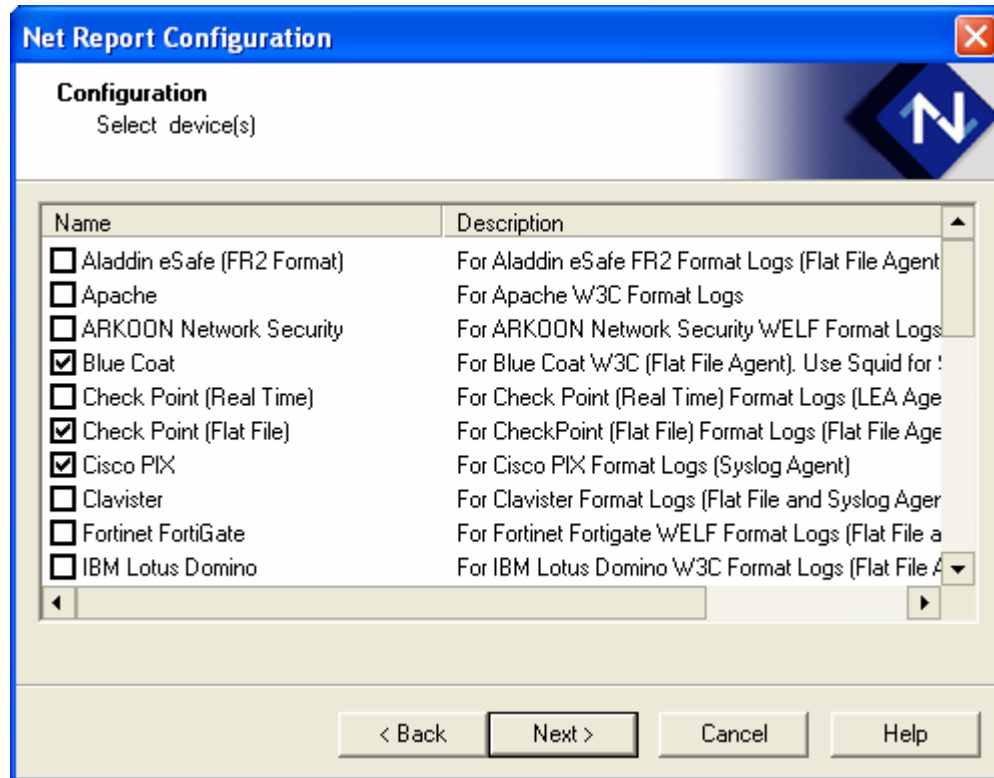
 **Note:** all the Firewalls (except for Cisco PIX) share the same Firewall Database Tables (fw\_\*) and all the Proxies share the same Proxy Database Tables (px\_\*).

To understand the implications of the **Overwrite existing data** check box, please follow the example below:

## Example

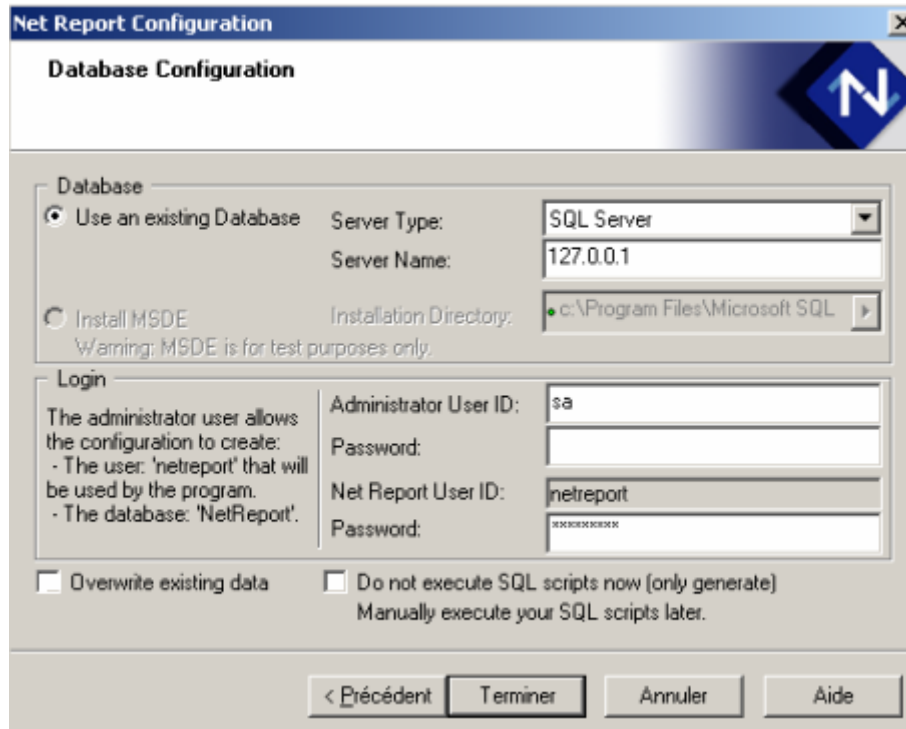
### First Net Report Configuration Steps

1. Select the following devices in the **Configuration Select device(s)** dialog box:
  - Blue Coat
  - Check Point
  - Cisco PIX



2. Continue with all the configuration steps (in the suite of Net Report Configuration Wizard Screens) before reaching the **Database Configuration** screen.

3. Leave the **Overwrite existing data** check box clear:



The screenshot shows the 'Net Report Configuration' dialog box with the 'Database Configuration' tab selected. The 'Database' section has 'Use an existing Database' selected, with 'Server Type' set to 'SQL Server' and 'Server Name' set to '127.0.0.1'. The 'Install MSDE' option is unselected, with a warning message below it. The 'Login' section contains fields for 'Administrator User ID' (sa), 'Password', 'Net Report User ID' (netreport), and 'Password'. At the bottom, the 'Overwrite existing data' checkbox is unselected, and the 'Do not execute SQL scripts now (only generate)' checkbox is also unselected. The dialog box has buttons for '< Précédent', 'Terminer', 'Annuler', and 'Aide'.

#### Result:

- The Database tables for Blue Coat (px\_\*) will be created.
- The Database tables for Check Point (fw\_\*) will be created.
- The Database table for Cisco PIX will be created (Data\_PIX).

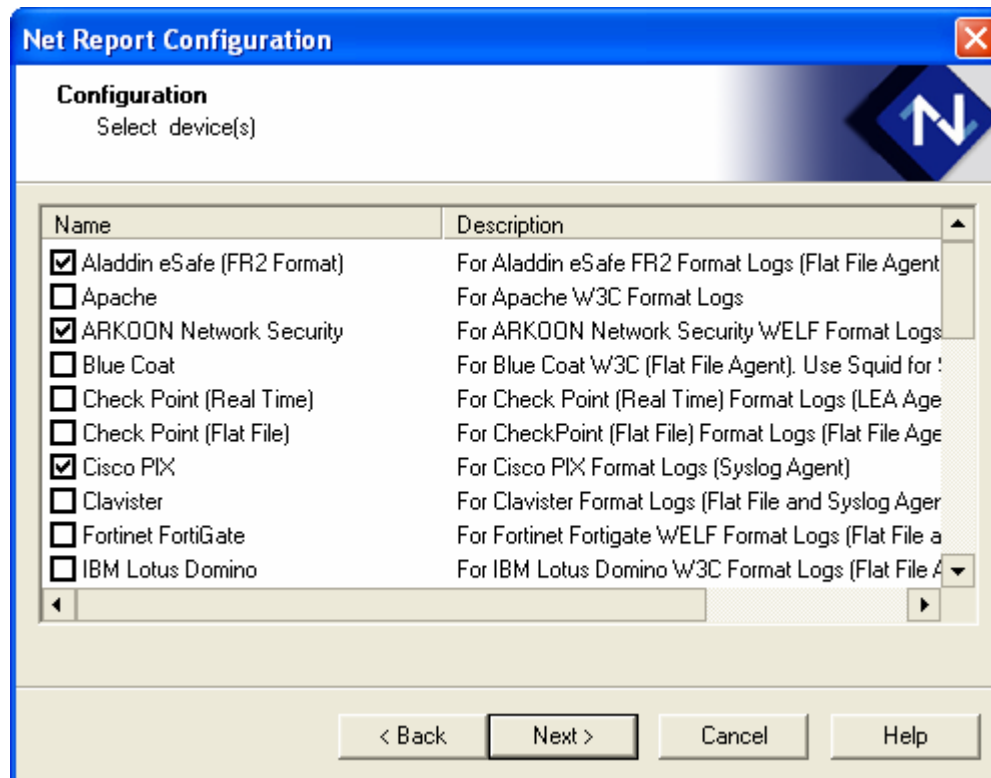
4. Select the **Overwrite existing data** check box. This will have the same effect. The Tables listed above will be created in the database because they did not exist previously.

## Second Net Report Configuration

### Steps

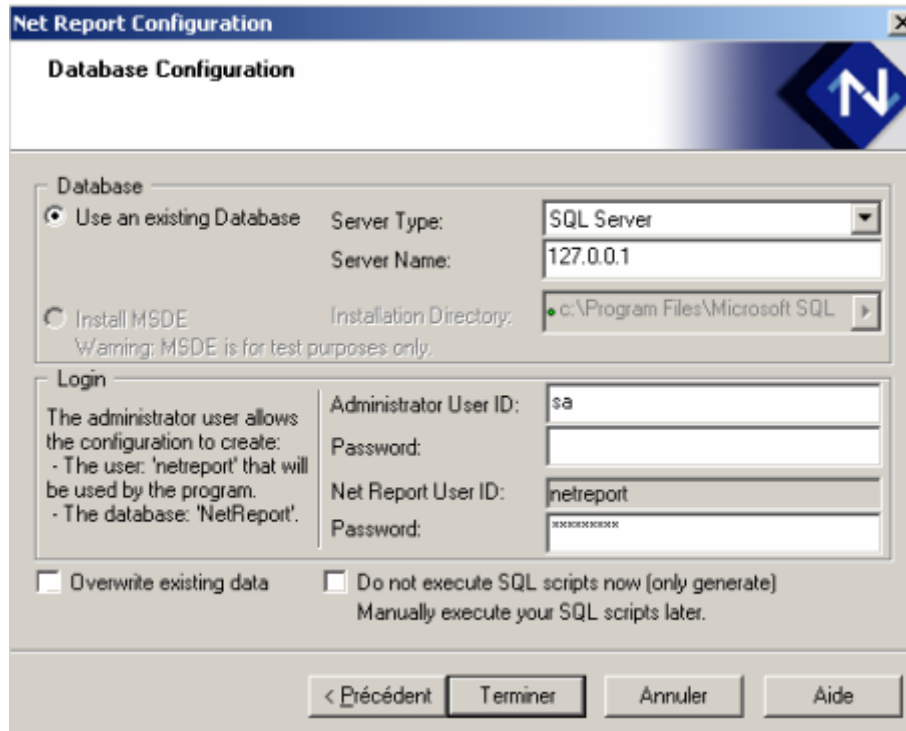
1. Reconfigure Net Report by selecting the following devices in the **Configuration Select device(s)** dialog box:

- Aladdin eSafe
- ARKOON Network Security
- Cisco PIX
- Microsoft ISA Server (Proxy)



2. Continue with all the configuration steps (in the suite of Net Report Configuration Wizard Screens) before reaching the **Database Configuration** screen.

3. Leave the **Overwrite existing** data check box clear:



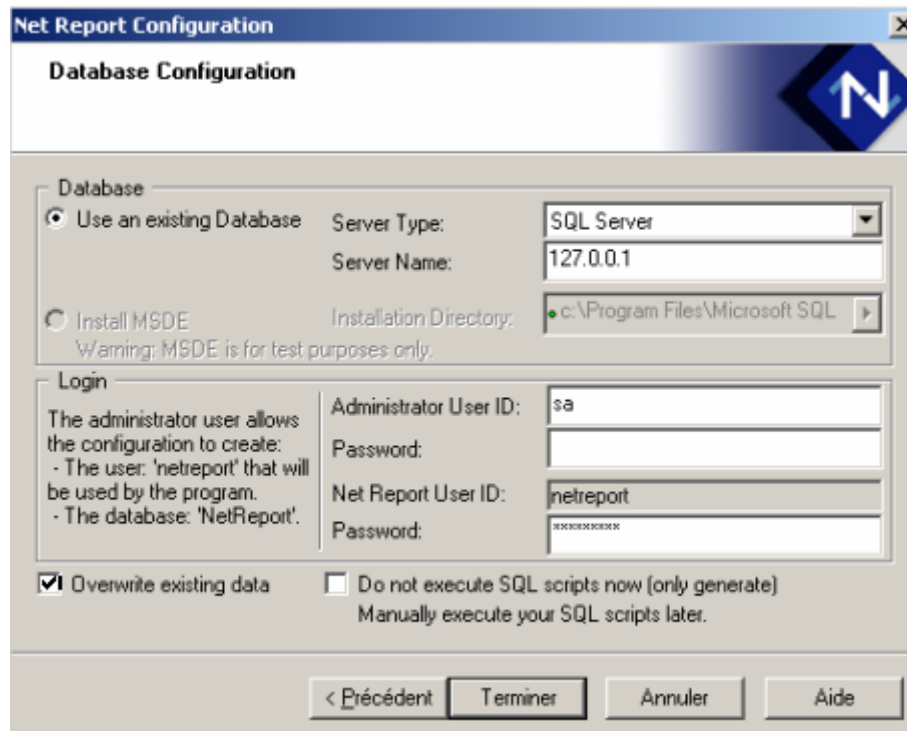
The image shows a screenshot of the 'Net Report Configuration' window, specifically the 'Database Configuration' tab. The window has a title bar with the text 'Net Report Configuration' and a close button. The main area is divided into several sections:

- Database:** This section contains two radio buttons. The first, 'Use an existing Database', is selected. To its right, there are two text boxes: 'Server Type:' with a dropdown menu set to 'SQL Server', and 'Server Name:' with the text '127.0.0.1'. Below these is another radio button, 'Install MSDE', which is unselected. To its right is a text box for 'Installation Directory:' containing 'c:\Program Files\Microsoft SQL'. A warning message below reads: 'Warning: MSDE is for test purposes only.'
- Login:** This section contains a text box with instructions: 'The administrator user allows the configuration to create: - The user: 'netreport' that will be used by the program. - The database: 'NetReport''. To the right are four text boxes: 'Administrator User ID:' with 'sa', 'Password:' (empty), 'Net Report User ID:' with 'netreport', and 'Password:' (masked with asterisks).
- Options:** At the bottom of the configuration area, there are two checkboxes. The first, 'Overwrite existing data', is unselected. The second, 'Do not execute SQL scripts now (only generate) Manually execute your SQL scripts later.', is also unselected.
- Navigation:** At the very bottom of the window, there are four buttons: '< Précédent', 'Terminer', 'Annuler', and 'Aide'.

#### Result:

- The Database table will be created for Aladdin eSafe.
- The Database tables for Blue Coat (px\_\*) which was created in the first Net Report Installation will be destroyed and created for Microsoft ISA Server,
- The Database tables for Check Point (fw\_\*) which was created in the first Net Report Installation will be destroyed and created for ARKOON Network Security.

4. Select the **Overwrite existing data** check box:



**Net Report Configuration**

**Database Configuration**

Database

Use an existing Database    Server Type:     Server Name:

Install MSDE    Installation Directory:     Warning: MSDE is for test purposes only.

Login

The administrator user allows the configuration to create:

- The user: 'netreport' that will be used by the program.
- The database: 'NetReport'.

Administrator User ID:     Password:

Net Report User ID:     Password:

Overwrite existing data     Do not execute SQL scripts now (only generate)  
Manually execute your SQL scripts later.

< Précédent    Terminer    Annuler    Aide

**Result:**

- The Database table for Aladdin eSafe will be created.
- The Database tables for Blue Coat (px\_\*) which was created in the first Net Report Configuration will be destroyed and created for Microsoft ISA Server.
- The Database tables for Check Point (fw\_\*) which was created in the first Net Report Configuration will be destroyed and created for ARKOON Network Security.
- The Database Table for Cisco PIX will be destroyed and created.