

Your Question

Article: 00080

Question:

How do I use Net Report Web Portal on Windows 2003 Server SP1?

Net Report Answer

Introduction

This Article explains how to use Net Report Web Portal on Windows 2003 Server SP1. Please follow the tasks listed below:

- **Task 1:** Launching the Component Services Console DCOM Config Directory.
- **Task 2:** Configuring the d7LEOService.
- **Task 3:** Configuring the D7TaskManager, d7VEMService, DataSelect Server Helpers Service and DataSet Web Objects Manager Service.

Table of Contents

	Page
Table of Contents	2
Task 1: Launching the Component Services Console DCOM Config Directory	3
Task 1: Procedure.....	3
Task 2: Task 2: Configuring the d7LEOService	5
Task 2: Procedure.....	5
Task 3: Configuring the D7TaskManager, d7VEMService, DataSelect Server Helpers Service and DataSet Web Objects Manager Service	10
Task 3: Procedure.....	10

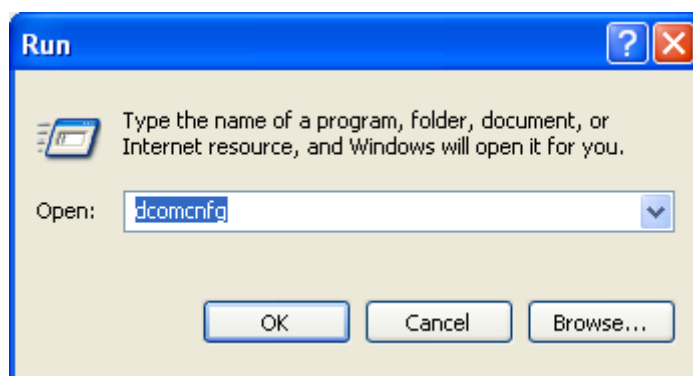
Task 1: Launching the Component Services Console DCOM Config Directory

Task 1: Procedure

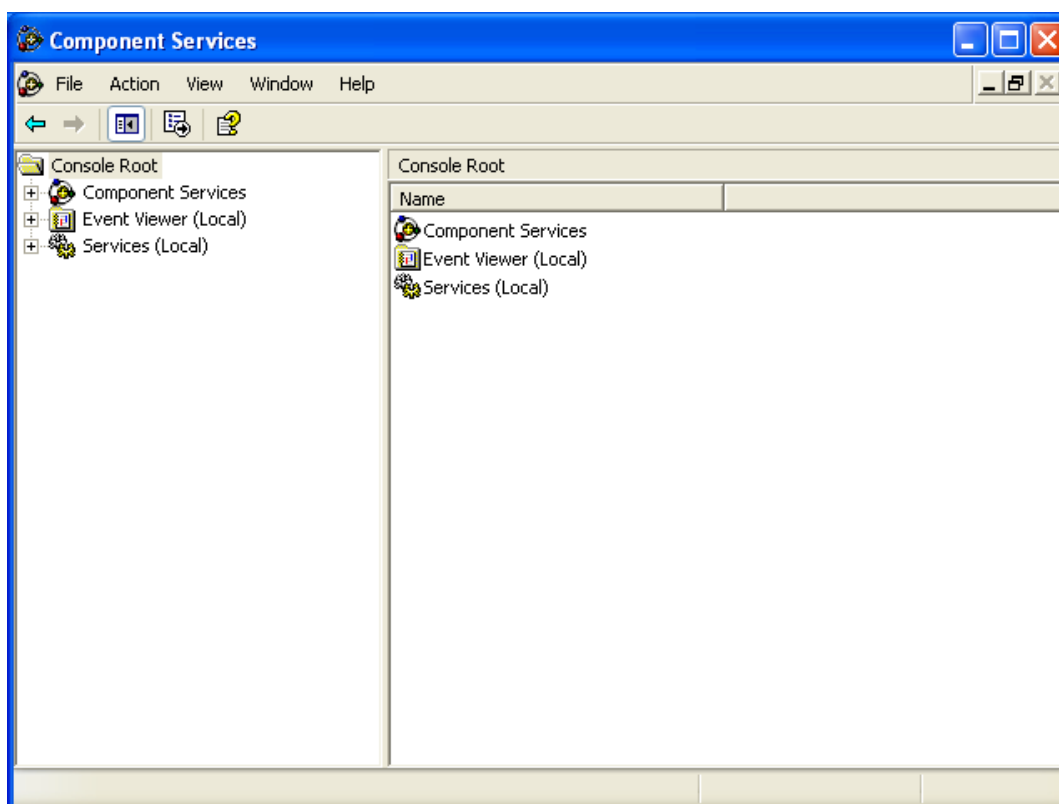
To launch the Component Services Console DCOM Config directory, please follow the steps below:

Steps

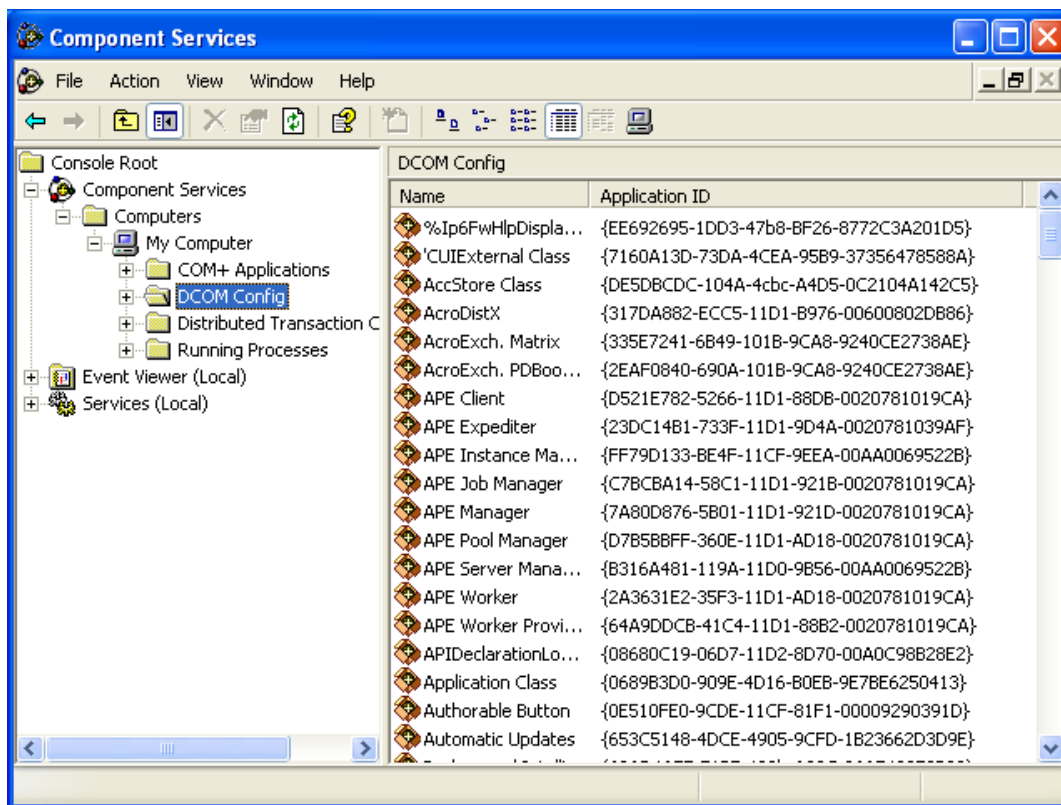
1. Select **Start> Run...** The **Run** dialog box appears.
2. Enter dcomcnfg in the **Open** field.



3. Click **OK**. The **Component Services** console appears.



4. Select **Console Root > Component Services > Computers > My Computer > DCOM Config** in the left **Console Root** pane.



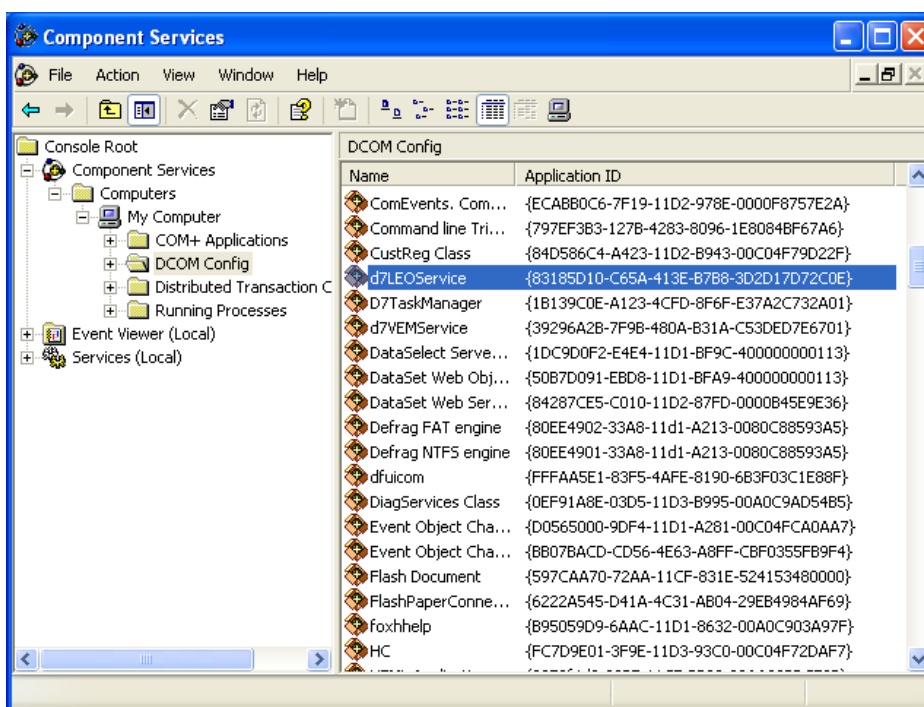
Task 2: Configuring the d7LEOService

Task 2: Procedure

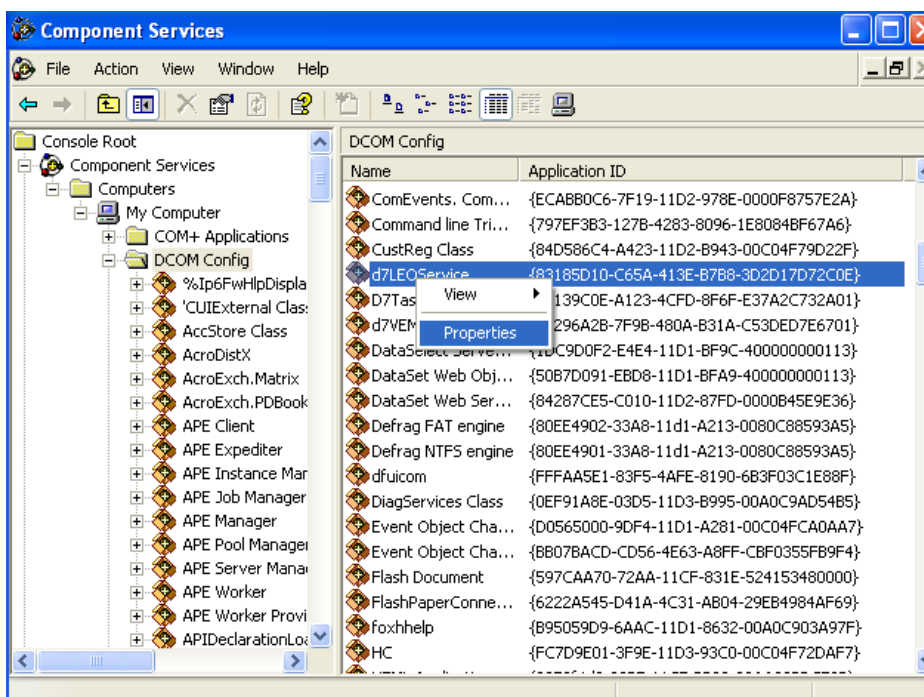
To configure the d7LEOService, please follow the steps below:

Steps

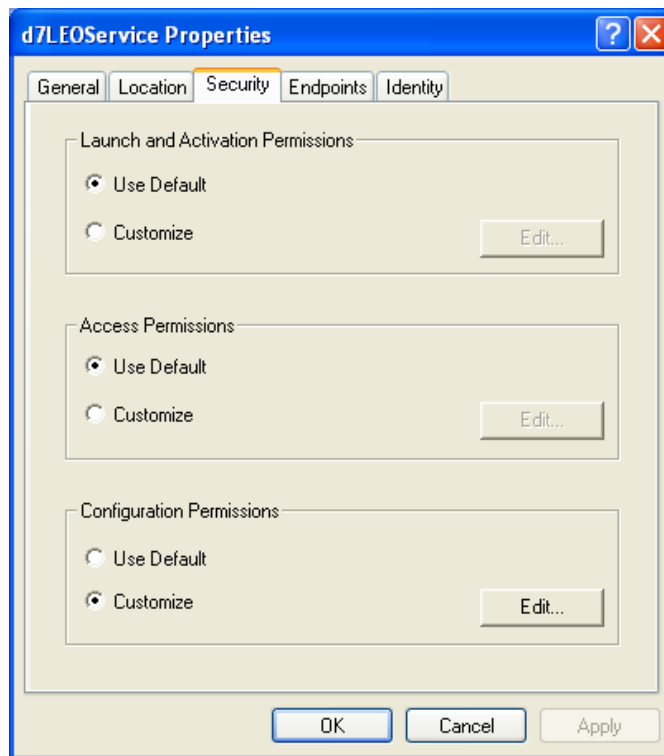
1. Scroll the right pane to select **d7LEOService**.



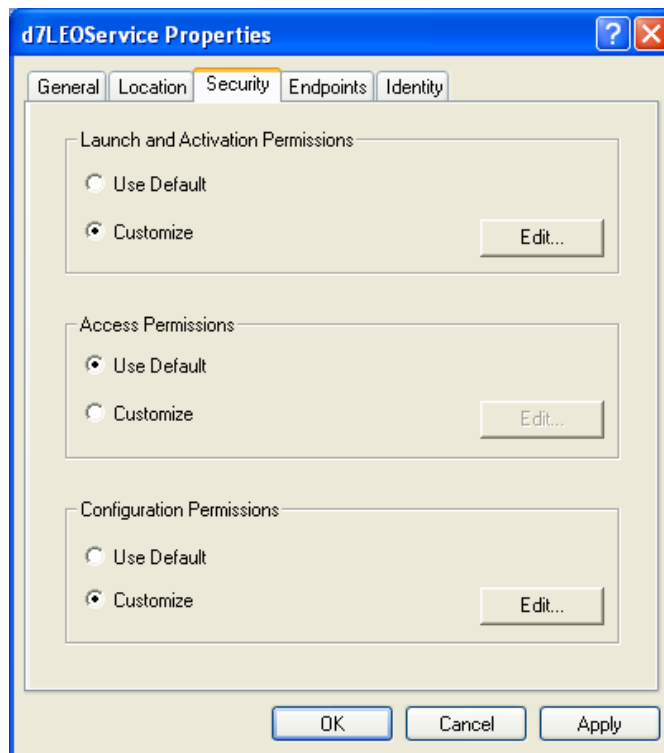
2. Right-click **d7LEOService** and select **Properties** in the context menu. The **d7LEOService** property sheet appears.



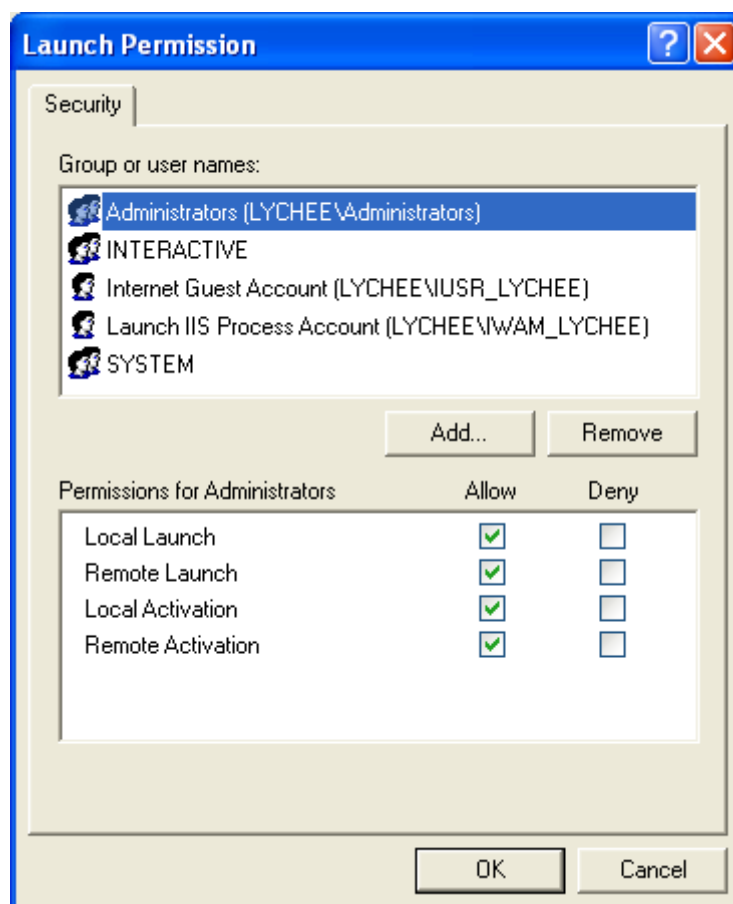
3. Select the **Security** tab.



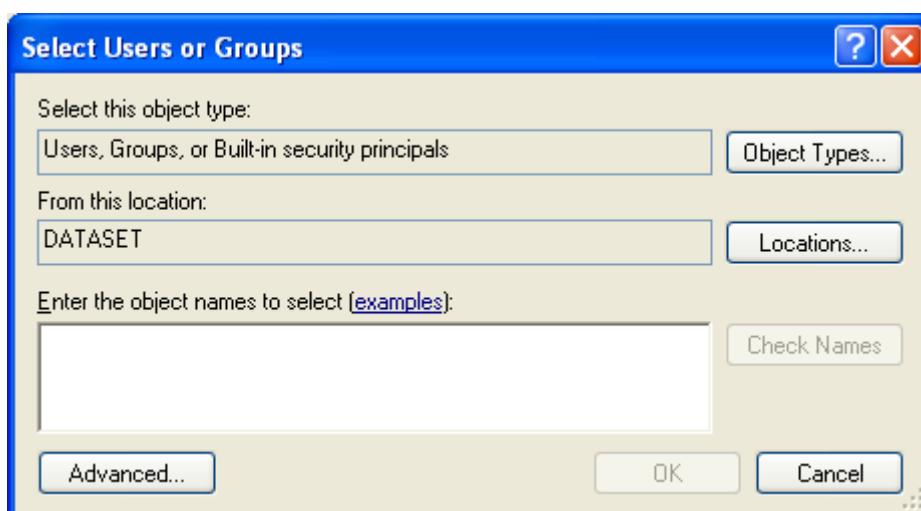
4. Select the **Customize** option button in the **Launch and Activation Permissions** zone



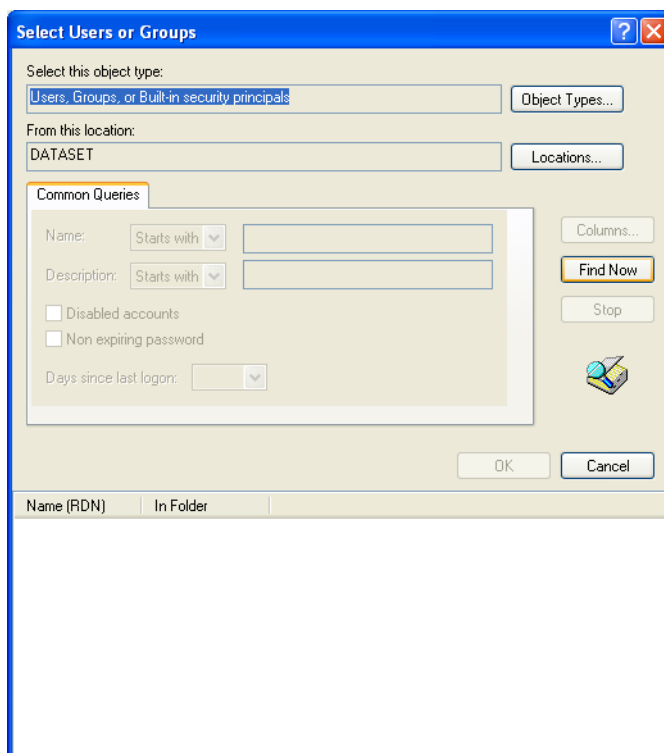
5. Click **Edit...** The **Launch Permission** property sheet appears.



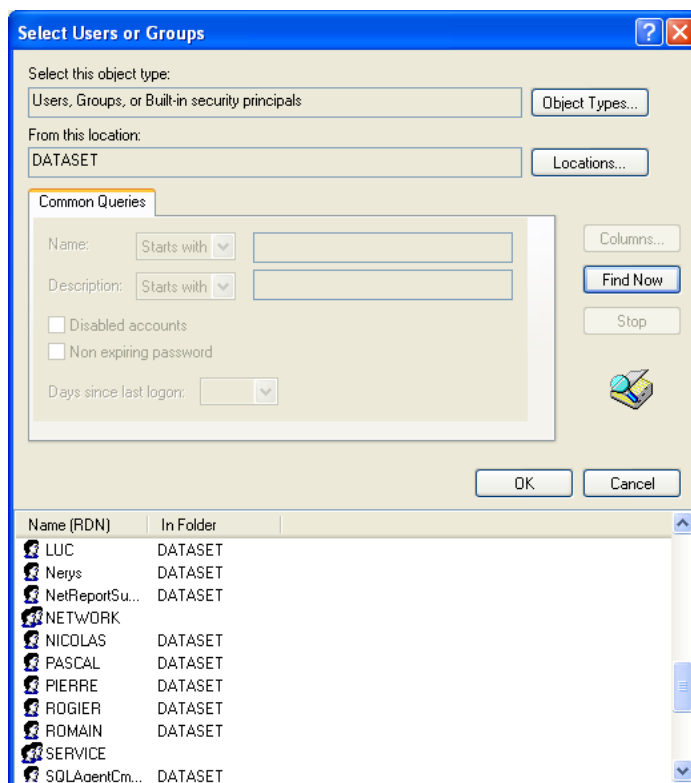
6. Click **Add...** The **Select Users or Groups** dialog box appears.



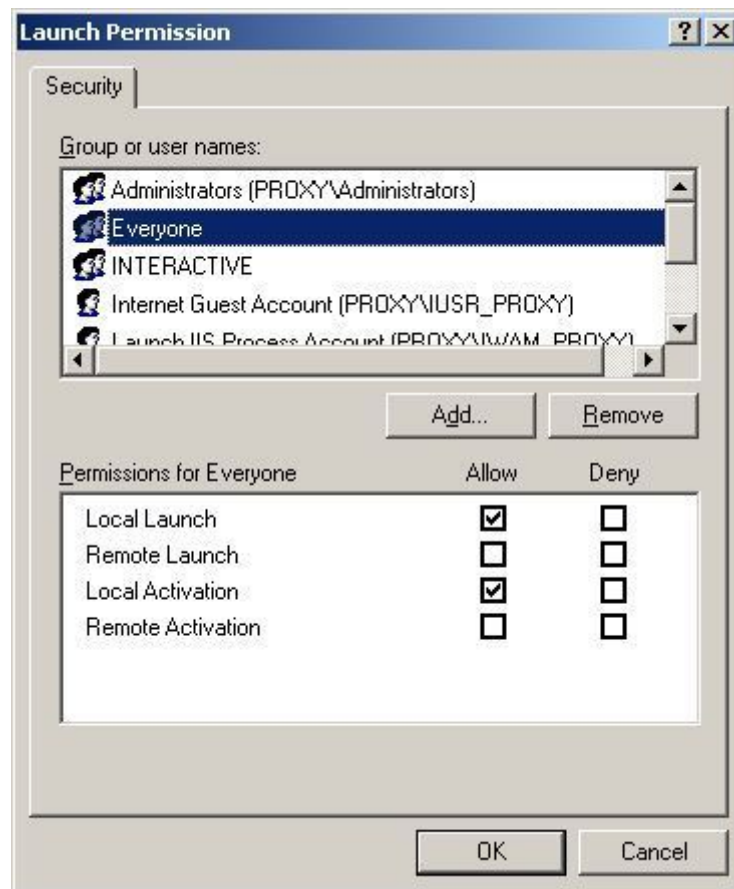
7. Click **Advanced...** The **Select Users or Groups** dialog box appears.



8. Click **Find Now**. The RDN and Folder information appears.



9. Select **Everyone**.



10. Click **OK**.

11. Click **OK**.

12. Select the **Local Launch** and **Local Activation** option buttons.

13. Click **OK**.

14. Click **OK**.

Task 3: Configuring the D7TaskManager, d7VEMService, DataSelect Server Helpers Service and DataSet Web Objects Manager Service

Task 3: Procedure

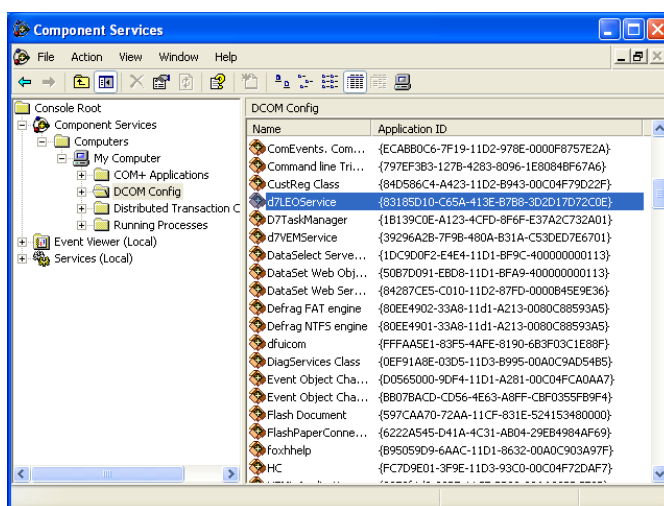
Please note that you must now configure for each of the following applications:

- D7TaskManager
- d7VEMService
- DataSelect Server Helpers Service
- DataSet Web Objects Manager Service

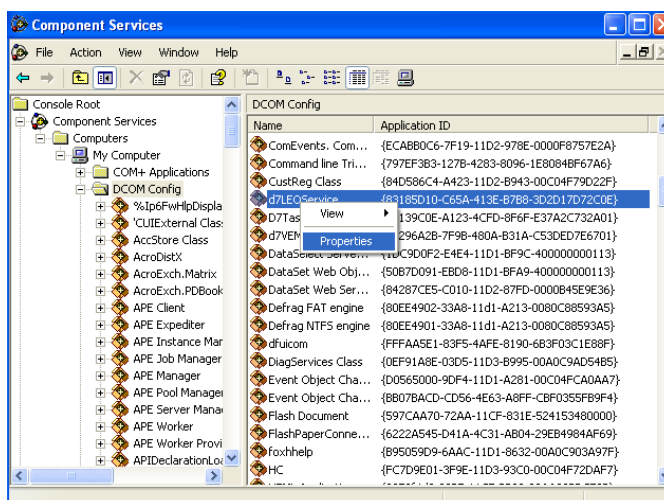
To do so, please follow the procedure explained in Task 2 in this document. Each time you configure one of the four applications listed above, simply replace d7LEOService for the appropriate application. This infers that you will need to perform the procedure four times, once for each of the four applications listed above.

Steps

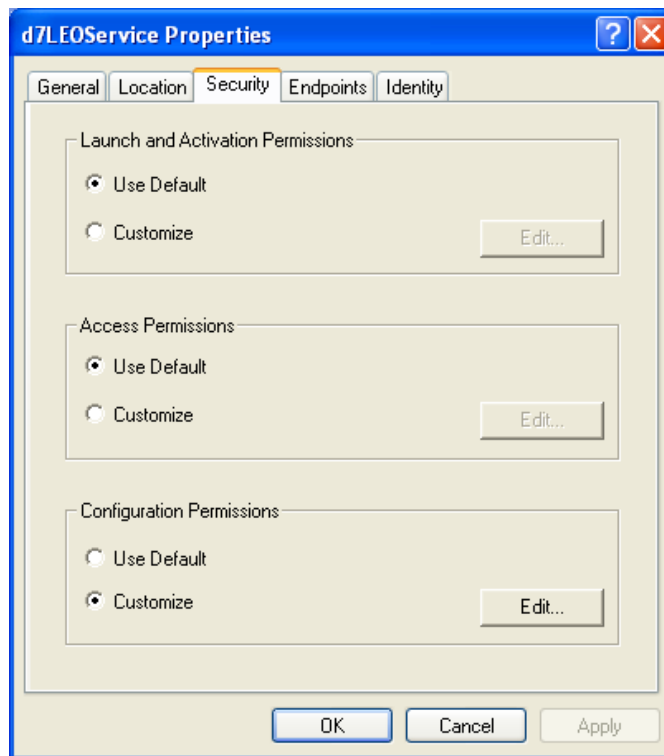
1. Scroll the right pane to select the Application (in this example, d7LEOService).



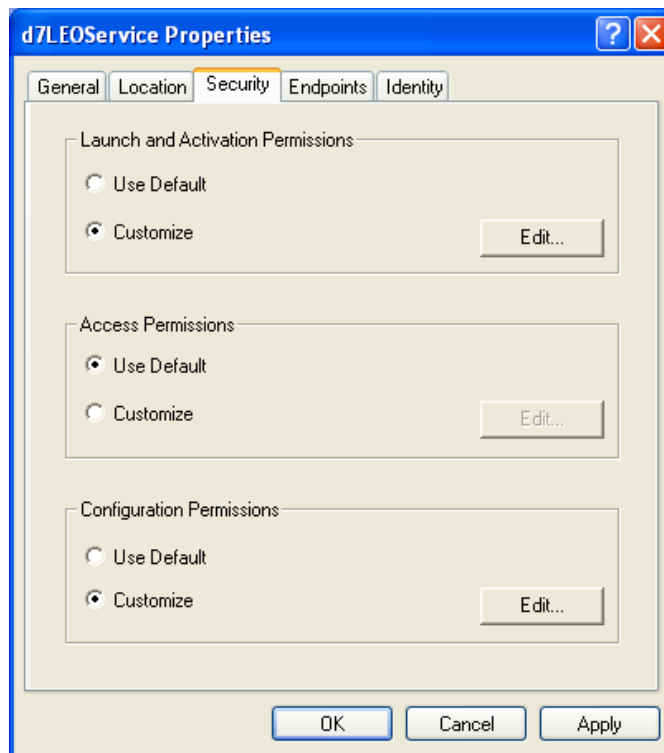
2. Right-click the application name and select **Properties** in the context menu. The [Application Name] property sheet appears.



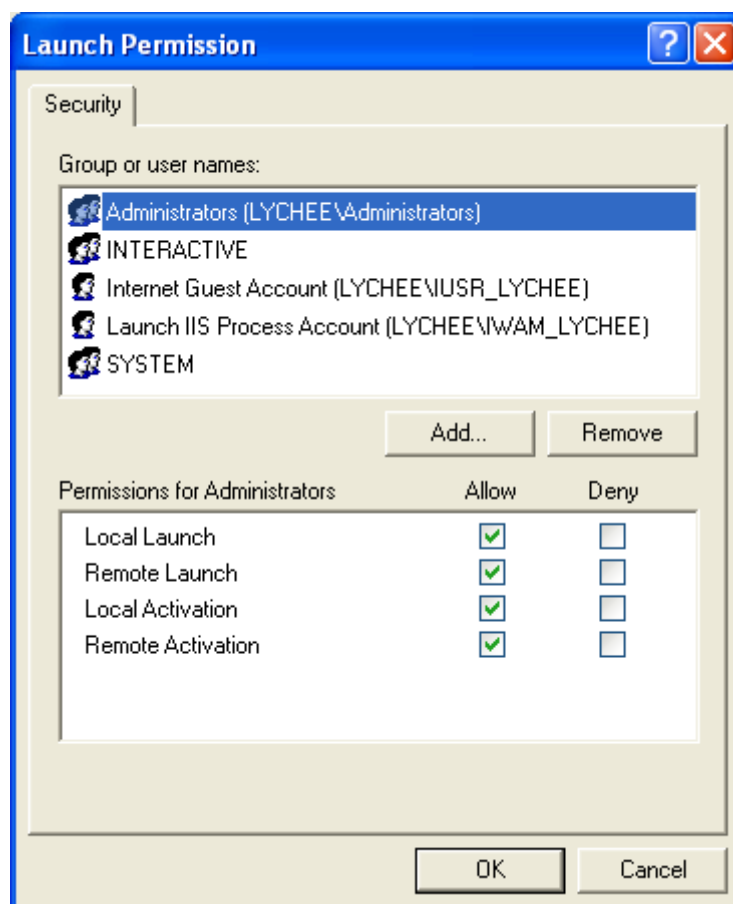
3. Select the **Security** tab.



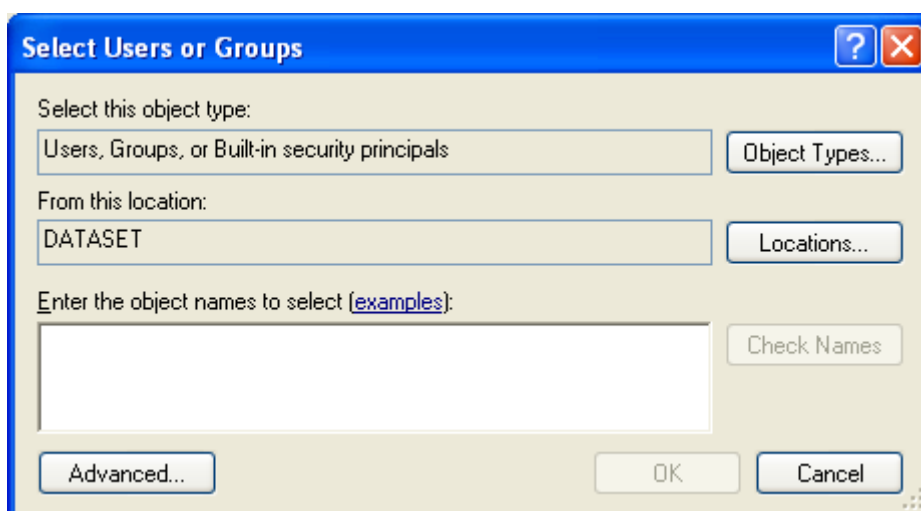
4. Select the **Customize** option button in the **Launch and Activation Permissions** zone



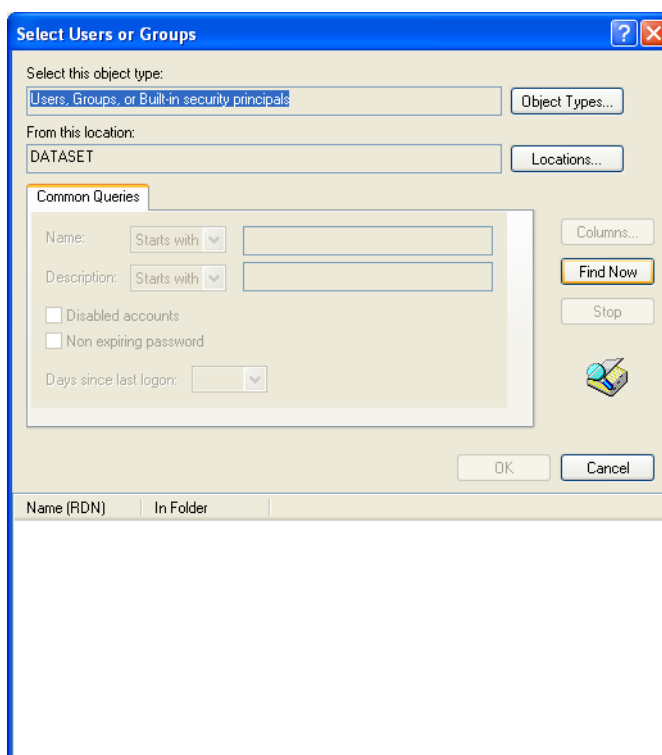
5. Click **Edit...** The **Launch Permission** property sheet appears.



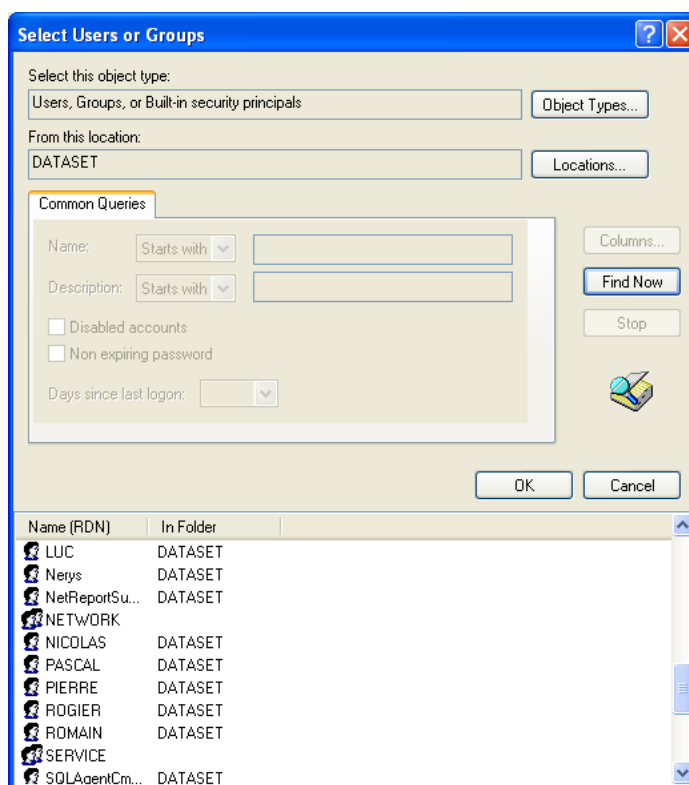
6. Click **Add...** The **Select Users or Groups** dialog box appears.



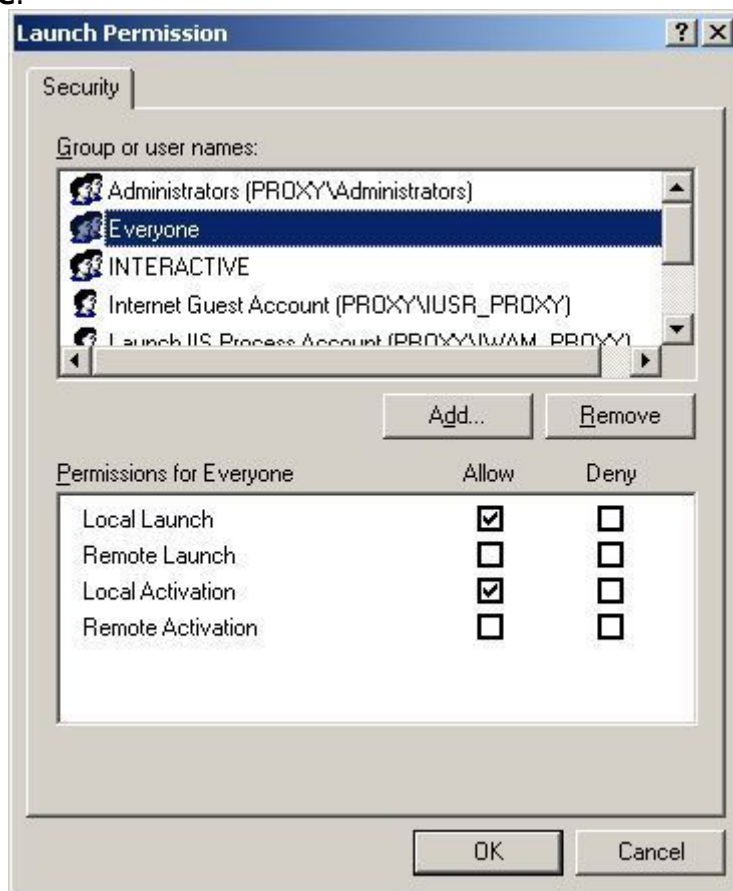
7. Click **Advanced...** The **Select Users or Groups** dialog box appears.



8. Click **Find Now**. The RDN and Folder information appears.



9. Select **Everyone**.



10. Click **OK**.

11. Click **OK**.

12. Select the **Local Launch** and **Local Activation** option buttons.

13. Click **OK**.

14. Click **OK**.

Further Information

Please see our Net Report Knowledge Base at:

http://www.netreport.fr/us/support/sup_knowledgebase.asp