



## Your Question

**Article: 00114**

**Question:**

How to Install and Use Net Report Cubes?

## Net Report Answer

### Introduction

This article explains how to install and start using Net Report cubes, it is structured as follows:

- Installing Net Report Cubes
- Using Net Report Cubes

**Note:** to use Net Report Cubes you must have Microsoft Office installed on your system.

**Important:** Net Report Cubes use Microsoft Office Web Components Version 2003. If you do not have them installed, once you have run the WebVisionCube.exe program and double-clicked a \*.hta file, a window will appear with the following hyperlink to follow only if you need to download and install Microsoft Office Web Components 2003:

<http://www.microsoft.com/downloads/details.aspx?FamilyID=7287252c-402e-4f72-97a5-e0fd290d4b76&DisplayLang=en>

### Installing Net Report Cubes

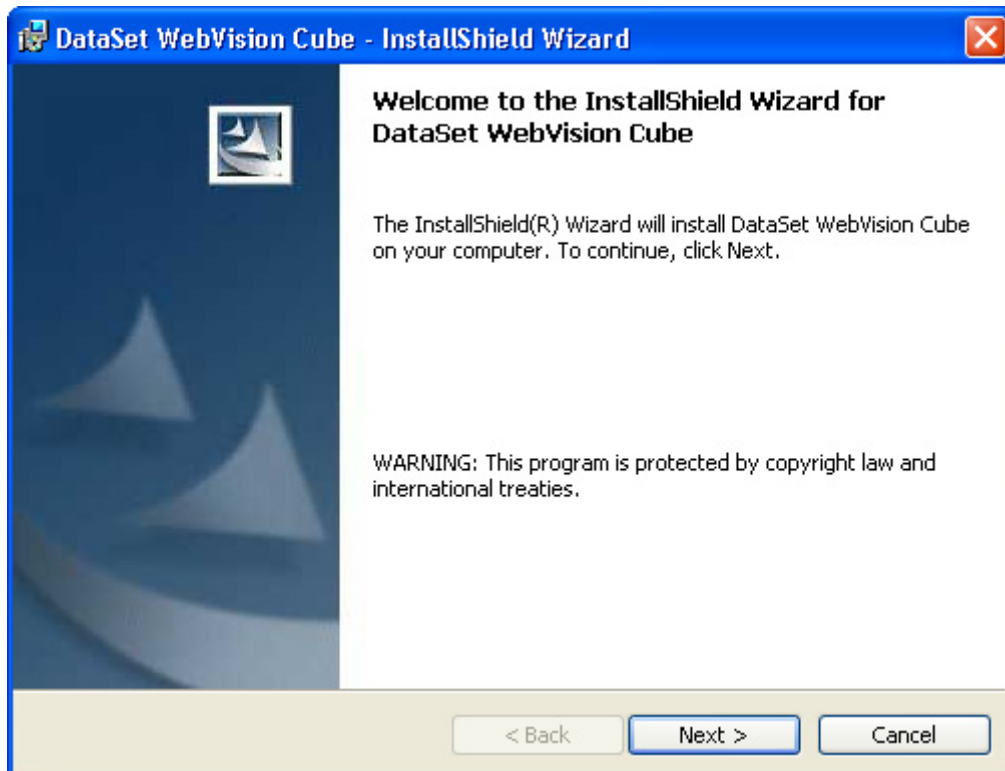
To install Net Report cubes, please follow the steps below:

#### Steps

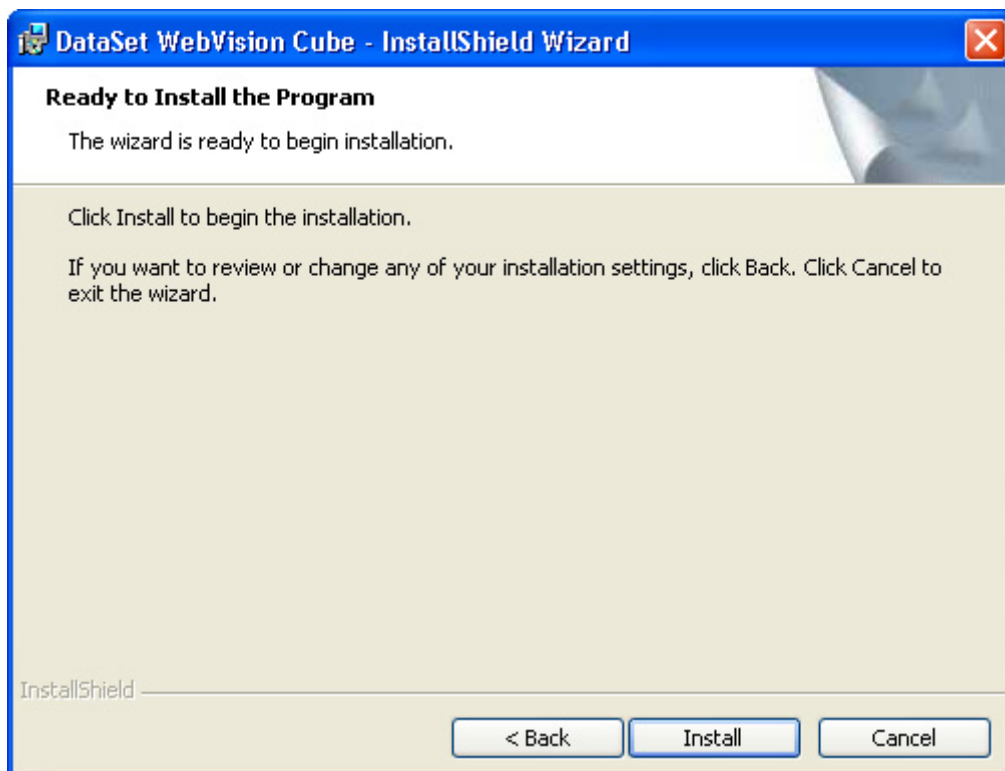
1. Download the NetReportCubes.zip file, click the hyperlink below:  
<http://www.net-report.net/downloads/cubes/NetReportCubes.zip>  
or use the Cube zip file you received in the email attached with this document.

**Note:** the NetReportCubes.zip file includes the following files:

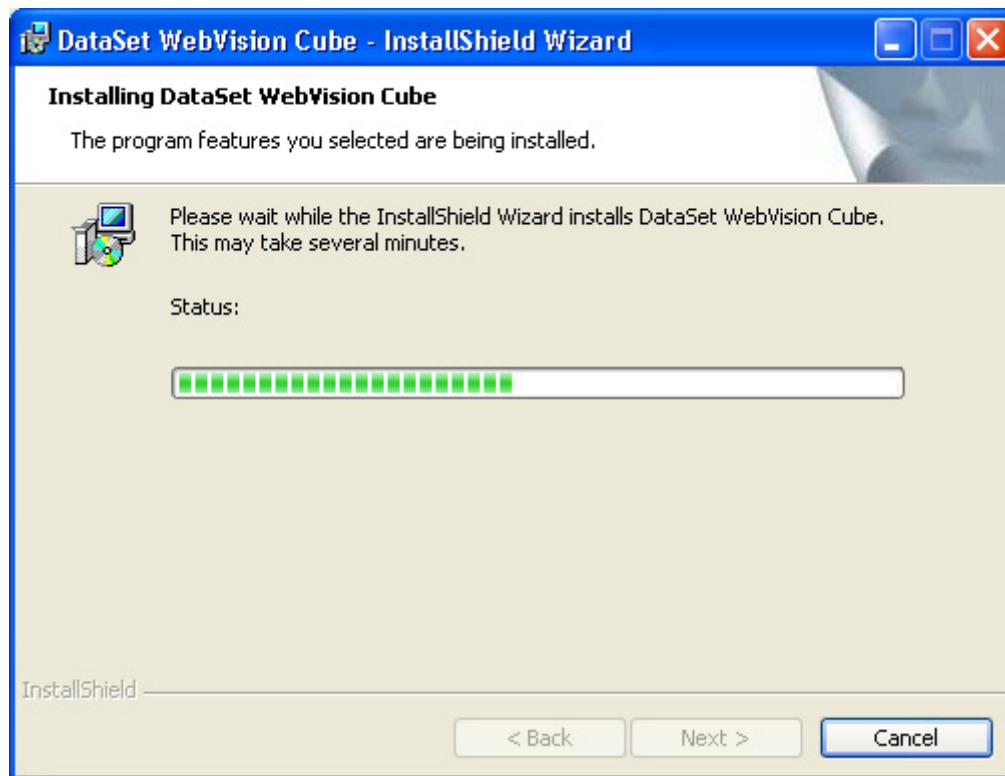
- The WebVisionCube.exe program.
  - Several directories containing data (\*.cub files), views (\*.xml files), and launchers (\*.hta or \*.lnk files).
2. Extract the files to the directory you wish.
  3. Double-click the WebVisionCube.exe file in the NetReportCube folder. The **Preparing to Install...** dialog box appears.



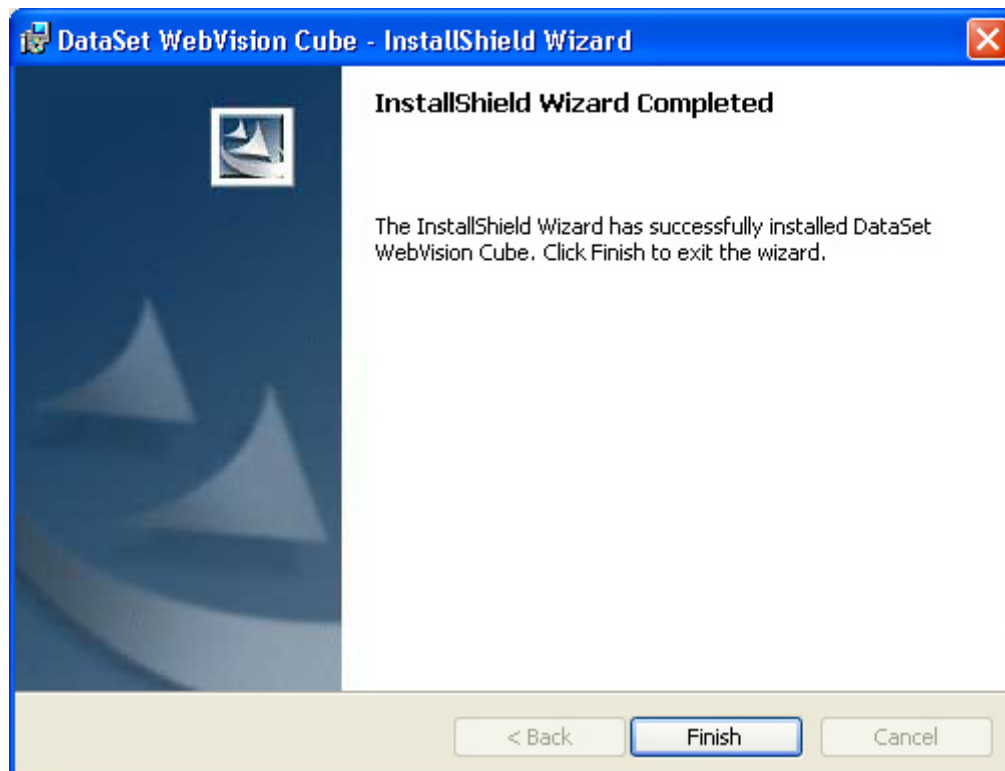
4. Click **Next>**.



5. Click **Install**.



6. Click **Finish**.

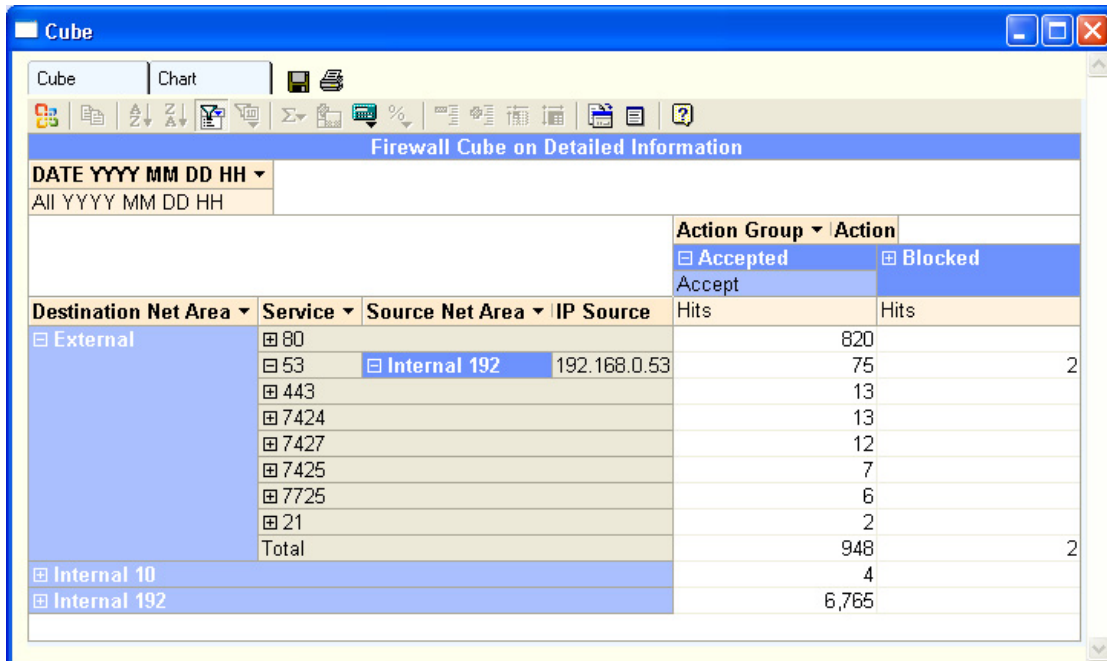


## Using Net Report Cubes

To start using Net Report cubes, please follow the steps below:

### Steps

1. Double-click a \*.hta file in the NetReportCubes folder. For example, Cube Firewall Traffic by Service and NetArea.hta. The **Cube** tab appears.




Firewall Cube on Detailed Information				Action Group	
DATE YYYY MM DD HH				Accepted	Blocked
All YYYY MM DD HH				Accept	Hits
Destination Net Area	Service	Source Net Area	IP Source	Hits	Hits
External	80			820	
	53	Internal 192	192.168.0.53	75	2
	443			13	
	7424			13	
	7427			12	
	7425			7	
	7725			6	
	21			2	
	Total			948	2
	Internal 10				4
Internal 192				6,765	

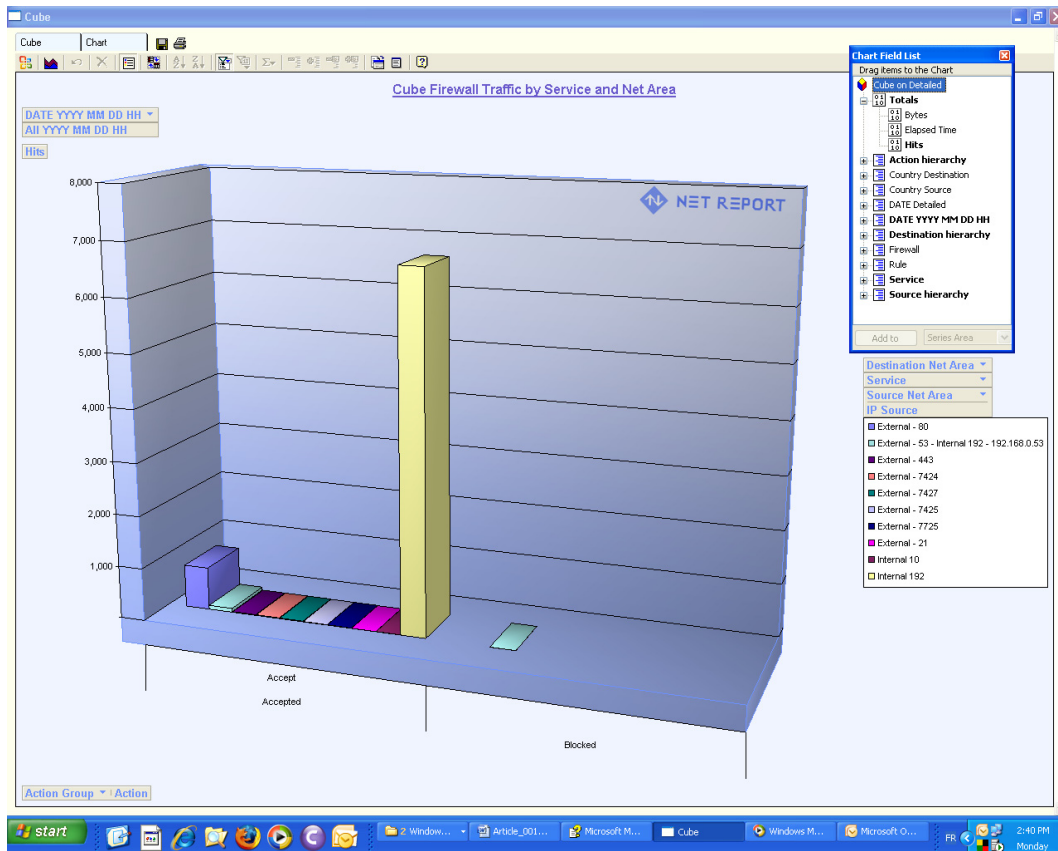
**Note:** if you have not installed Microsoft Office Web Components, then a window will appear with the following hyperlink to follow if you need to download and install Microsoft Office Web Components 2003:


<http://www.microsoft.com/downloads/details.aspx?FamilyID=7287252c-402e-4f72-97a5-e0fd290d4b76&DisplayLang=en>

2. Manipulate cubes like excel pivot tables, performing drag-and-drop operations on field dimensions.

**Note:** click the  **Field List** icon to view the list of field dimensions.

3. Click the **Chart** tab to see the graph view.



**Note:** to change the graph type click on the top left  **Chart Type** icon

**Important:** for more information on how to create and manipulate cubes with Net Report, please click the following hyperlink:  
<http://www.net-report.net/us/OurSupport/Net-Report-Demo-Movies.htm>